



# SCANDUST 6000

MANUAL



**SCANMASKIN**  
MACHINES—MINERALS—KNOW-HOW

Unpacking

When unpacking the machine, please check for damage and that that following accessories are included:

- The hose with end fittings
- Steel tube
- Floor nozzle

If any of above-mentioned parts are missing, please contact your local distributor or our sales representative.

Safety Instructions

Handling

Warning

- Cables damaged through crushing or splitting can be dangerous if used and should be replaced immediately. Risk of personal injury.

Warning

- Do not connect the machine to an unearthed socket. Risk of personal injury.

Warning

- Make sure the assembly area is firm, so the dust extractor does not tip over. Risk of personal and material injury.

Warning

- Risk of pinching when handling the toggle fastener.

Warning

- The machine must not be use in environments where explosive gases may be present. Serious risk of explosions.

Service

Warning

- Remove the plug from the wall socket when carrying out maintenance work. Risk of personal injury.

Warning

- Dust can be spread when the coarse filter and the absolute filter are replaced that can be hazardous to health. Accordingly, the user should wear protective glasses, protective gloves, and a breathing mask conforming to protection class FFP3.

Warning

- Do not puncture the absolute filer. Risk of dust dispersion.

Function

The machine is for sucking and separating dry, non-combustible dust with an explosion limit value of  $>0.1\text{mg/m}^3$

The switch starts the motor. Dust-laden air is then sucked through the inlet valve at high speed via the suction hose. The air is slowed down by the cyclone and coarse dust particles are separated out, partly by centrifugal force and partly by gravity. Air and finer particles then pass through the double filter system where they are separated. The machine is designed for reverse air pulse filter cleaning. The separated dust accumulates in the cyclone until the machine is switched off, when it drops through the bottom flap into the plastic bag.

Use

Before use, the user must be trained in handling the dust extractor and the hazardous dust. Connect the plug to an outlet with the correct voltage. The filter must be cleaned from time to time. This must be done before changing the plastic bag. It can also be done when the work is complete or when the suction is poor. Procedure: Cover the intake, let the machine build up vacuum for a few seconds and then quickly push down one of the handles and release it slowly. Repeat the procedure with the other handle. Repeat the procedures 5-10 times. If suction remains poor, the filter should be replaced. The plastic bag may only be replaced after cleaning the filter. The plastic bag must be tied up after removal. Only use original parts.

Filter change

**Risk of dust dispersion -Use of personal safety equipment Unhealthy dust can be spread during filter change. Accordingly, the user should wear protective glasses, protective gloves, and a breathing mask conforming to protection class FFP3.**

**Turn the machine off and pull the plug out of the socket.**

Main filter

Loosen the clamp between the upper and lower housing. Remove the hose connection Lift out the filter holder and place it carefully on a table. Remove all screws and then remove all (4 off) filters and place them in a plastic bag. Insert new filters in reverse order. Tighten the screws hard. Only original filters may be used.

Micro filter

Open the top covers on the filter tanks. Carefully lift out the filter plates from the tanks and remove the filters and place it in a clean plastic bag. This bag must be sealed properly. Insert the new filters in reverse order. Check the seal, when changing the filters check and change defective seals. Only original filters may be used. See accessories.

Important! The microfilters should not be cleaned, but rather replaced once they have been used Important! The operability of the microfilters can be reduced or even totally compromised if exposed to water.

Service

When cleaning and servicing the machine, you must switch off the machine and remove the plug from the outlet.

- Avoid cleaning with a high pressure cleaner. If necessary do not direct at the openings on the machine, especially the inlet/outlet for the cooling air.
- Before moving the machine from the work area, the machine must first be cleaned. Furthermore, the inlet must be locked using the expanding plug attached.
- All other equipment must be regarded as contaminated and be treated thereafter.
- If possible, use a special suitable room.
- Proper personnel protective equipment must be used.
- All parts which are contaminated after service must be carefully disposed of in plastic bags according to all regulations.
- If the machine has to be used for other purposes, it is extremely important that the machine is cleaned, to avoid the spread of hazardous dust.

Warranty

All Scandust devices and accessories have a 12-month factory warranty for material and manufacturing defects. Do not attempt to repair the suction apparatus without the consent of the manufacturer. The warranty does not cover defects which are the result of normal wear and tear, negligence, defective use, unauthorised repair or the suction apparatus being connected to the incorrect voltage. In the event of any complaint, the suction apparatus or an agreed part of it must be returned to us or our authorised representative for warranty examination and for any warranty repair or replacement.

Problem solving

The ScanDust 6000 dust extractor is designed and manufactured for severe environments and tasks, but the user should note that the machine components must be protected from knocks and blows. Filter, seals, attachments, and connections are carefully adapted and selected with regard to the operator’s work environment. Therefore, the machine must be treated with care if it is to work correctly for many years.

Problem	Cause	Procedure
Motor does not start	No power Switch defective	Connect the machine Change
Motor stops immediately after starting	Wrong fuse	Connect the right fuse
Motor runs, but there is no suction	Hose not connected Hose blocked No plastic bag	Connect the hose Clean the hose Fit plastic bag
Motor runs but suction is poor	Damage to the hose Filter blocked Top cover loose Dirt in the flap  Sealing defective	Change hose Change filter Adjust Clean the flap. <i>Use protective equipment</i> Change current seal
Dust blows from motor	Filter defective or loose	Adjust or change
Abnormal noise		Order service

KEEP THESE INSTRUCTIONS!

TEKNISKA DATA  
TECHNICAL DATA  
Scandust 6000

OM ÖVERENSSTÄMMELSE  
DECLARATION OF CONFORMITY  
DECLARATION DE CONFORMITÉ  
ERKLÄRUNG DER ÜBERSTIMMUNG  
SAMSVARSERKLØRING

ScanDust 6000	
MÄRKSPÄNNING Voltage	400 VAC, 3-fas
EFFEKTUTTAG Power	5500 W
STRÖM Current	16Amp
MAX LUFTMÄNGD Max airflow	530 m3/h
MAX UNDERTRYCK Max vacuum	-300 mbar
SUGSLANG Hose	10m x Ø76mm / 10m x Ø50
INLOPPSRÖR Inlet	Ø 76mm / Ø 50mm
TUBFILTER Tube filter	Polyester 5,6 m2 (4 x 1.4 m2) 99.5%
MIKROFILTER Micro filter	3.04 m2 (4x0.76 m2) 99.95%
LJUDNIVÅ Sound level	70 dB(A)
DIMENSION LxBxH Dimensions	1380x620x1320 mm
VIKT Weight	180 kg

Scanmaskin Sweden AB  
Heljesvägen 10  
S-437 36 Lindome

Försäkrar under eget ansvar att maskinen  
Declare under our sole responsibility that the machine  
Certifie sous sa propre responsabilité que le produit ciaprès  
Versichern auf eigener verantwortung, dass das Produkt  
Forsikrer under eget ansvar at maskinen

ScanDust 6000

Tillv.år/Manufact.year/Baujahr: 2011

som omfattas av denna försäkring är i överensstämmelse med standarder:  
included in this declaration, follows the provisions of the:  
est conforme aux aux normes suivantes:  
den folgenden Normen entspricht:  
er i overensstemmelse med standarder:

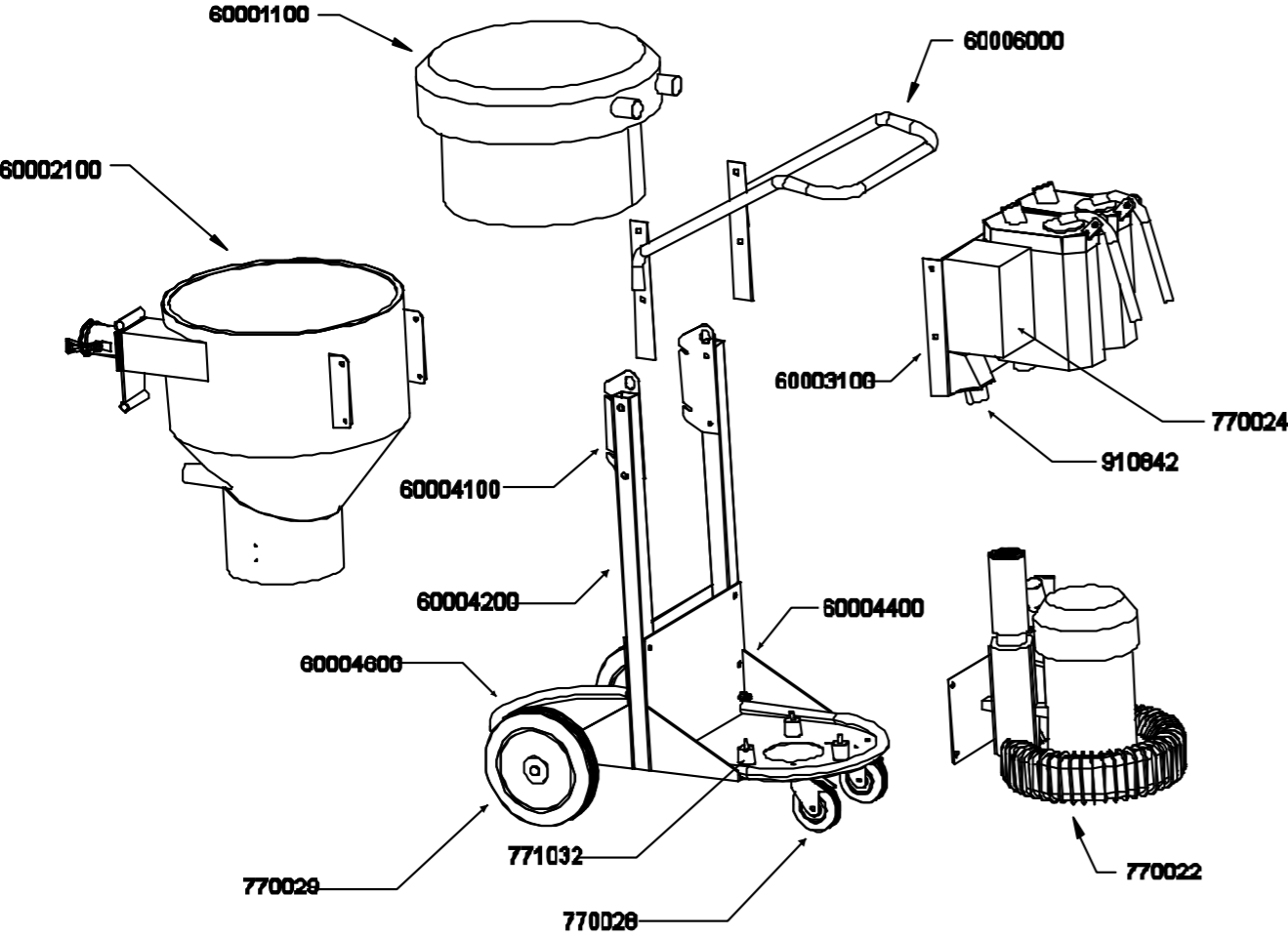
EN ISO 121000:2010, EN ISO 60204-1  
EN ISO 55011:2000  
EN ISO 60335-1,  
EN ISO 60335-2-69 & A1

enligt villkoren i/according to/selon/laul/i henhold til vilkårene i  
Machine Directive 2006/42/EG  
Low Voltage Directive 2006/95/EG  
EMC Directive 2004/108/EG

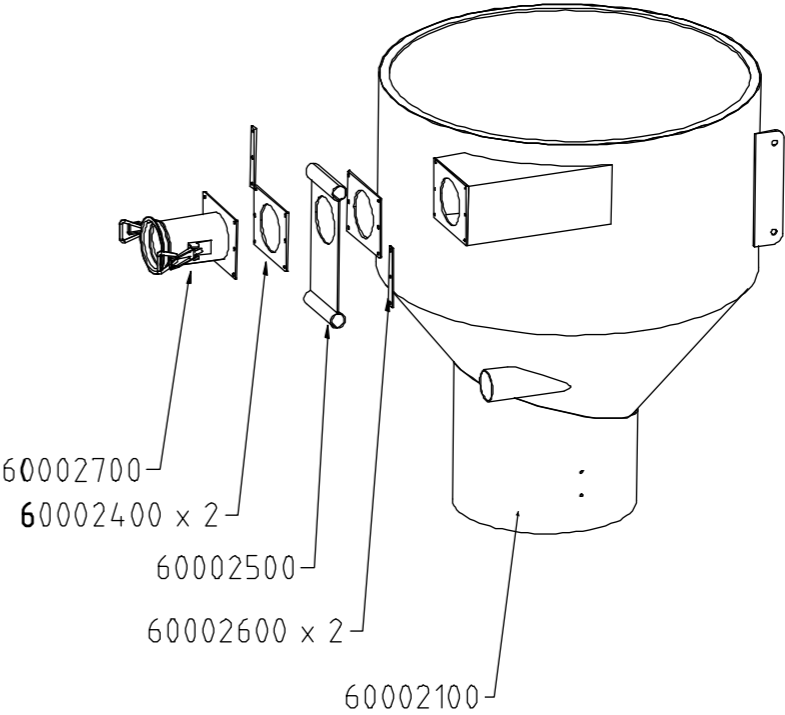
LINDOME 2010.12.29

Claes-Göran Bergstrand  
VD  
General Manager

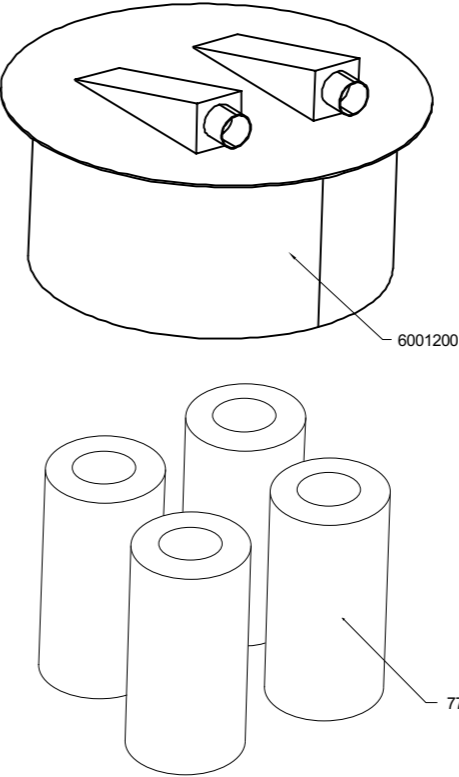
Overview SD6000



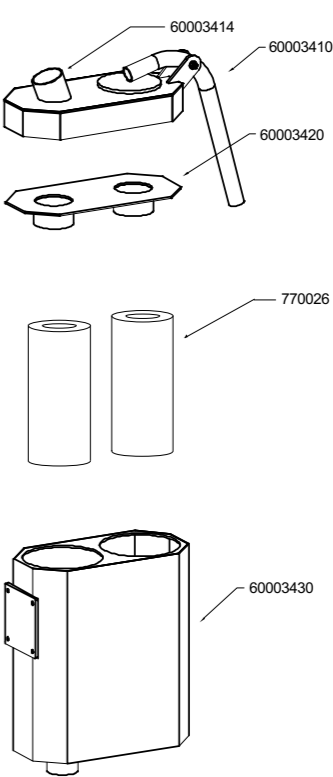
Cyclone overview



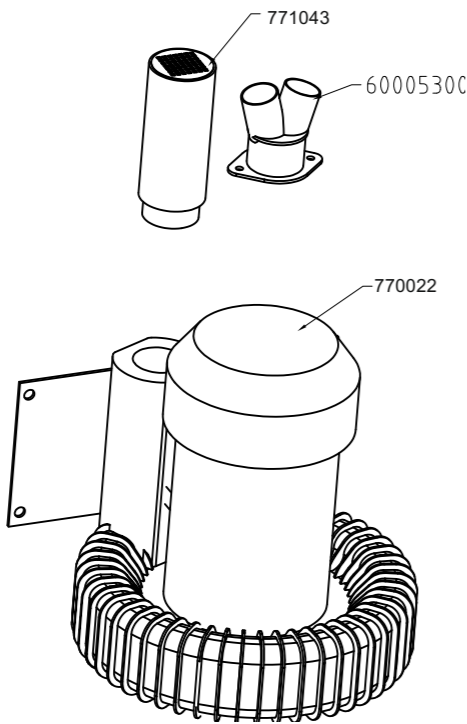
Main filter overview



Micro filter overview



Motor overview



Contact information

Cape Town Head office

Phone: +27 21 552 8566  
E-mail: sales@mactool.co.za

Johannesburg

Phone: +27 11 823 1077  
E-mail: salesjhb@mactool.co.za

Durban

Phone: +27 31 350 4004  
E-mail: saleskzn@mactool.co.za

NOTERINGAR/NOTES

Blank lined area for notes on page 18.

NOTERINGAR/NOTES

Blank lined area for notes on page 19.

# SCANMASKIN

**MACHINES—MINERALS—KNOW-HOW**

MACTOOL  
Diamond & Construction Products

[www.mactool.co.za](http://www.mactool.co.za)