



SCAN COMBIFLEX 650

MANUAL



SCANMASKIN
MACHINES-MINERALS-KNOW-HOW

Table of Contents

1 Specifications..... 40

1.1 Electrical specifications..... 40

1.2 Mechanical specifications 41

1.3 Options 41

1.3.1 Water connection 41

1.4 Tools..... 42

1.5 Range of application..... 43

1.6 Scope of supply 43

1.7 Overview 44

2 Safety Regulations 45

2.1 Legend..... 45

2.2 Safety precautions 45

2.3 Organizational measures 46

2.4 Personnel selection and qualification..... 47

2.5 Safety regarding operation of machine 47

2.6 Electrical safety 48

2.6.1 Cables..... 49

2.6.2 Using a generator 49

2.7 Definition of the “Safety off position” 49

2.8 Safety regarding maintenance 50

2.9 Safety regarding transport 50

2.9.1 Manual transport 50

2.9.2 Lifting 51

2.9.3 Inside vehicles..... 51

3 Transport..... 52

3.1 Precautions 52

3.2 Manual transport 52

3.3 Lifting..... 52

3.4 Inside vehicles 52

4 Operation..... 53

4.1 Precautions 53

4.2 Operation of machine 53

4.3 Control panel 54

4.4 Water connection..... 54

4.5 Start up 55

4.6 Stop 55

4.7 Adjusting grinding speed 55

4.8 Change grinding direction..... 55

4.9 Safety off position 55

4.10 Grinding..... 55

4.11 Changing tools..... 56

4.12 Using with generator 56

5 Maintenance..... 57

5.1 Precautions 57

5.2 Daily inspection prior to operation..... 57

5.3 Maintenance and inspection list 57

5.4 Grinding disc replacement / assembly 57

5.5 Cleaning the machine 58

5.6 Trouble shooting 58

5.6.1 Common faults..... 58

5.6.2 Error codes 59

6 Spare Parts 60

7 Warranty 68

8 EU Declaration..... 69

9 Alphabetical reference 70


10 Contact information 72


1 Specifications

The SC-650 is available with different power inputs and some options regarding wet grinding. This is described in the different sections later on in this chapter.

1.1 Electrical specifications

To find the specifications that apply to your machine, check the information plate on the electrical cabinet door.


 Never connect the SC-650 to any other voltage or number of phases than described in this specification.

 The power source must be fused according to “External fuse” in this specification; also the cables used must be marked and rated in accordance with the fuse used. Failure to comply with the correct fuses may cause fire or injuries.

Power choice ¹	400 V 3~ ²	230 V 3~	230V 1~
Power	7.5 kW (10 hk)	7.5 kW (10 hk)	4 kW (5 hk)
Current	15.3 A	27 A	29 A
Voltage	50/60 Hz ± 5%	50/60 ± 5%	50/60 Hz ± 5%
Frequency	16 A	32 A	32 A
	IEC 60309 3P+N+E 400V 16A	IEC 60309 3P+E 250V 32A	IEC 60309 2P+E 250V 32
Power inlet ⁴			
Part number		560040	560019
Noise level sound pressure	86 db(A)	86 db(A)	86 db(A)
Noise level sound effect	94 db (A)	94 db (A)	94 db (A)
Vibration (hand- and armvibration)	3.1 m/s ²	3.1 m/s ²	3.1 m/s ²

Table 1-1 Electrical specifications

All models are CE-marked.

 If using a generator see “2.6.2Using a generator”

¹ This refers to different power choices. Note that a SC-650 made for one choice of power must be used with that particular choice.
² Standard
³ Maximum current for the fuses used in the power source (i.e. the distribution box).
⁴ This is the standard inlet used. Machines sold outside of EU will be shipped either with a local standard inlet or an adapter.

1.2 Mechanical specifications

Model	SC-650
Grinding diameter	650 mm (25.6")
Grinding plate diameter	210 mm (8.3")
Grinding plate speed	350 – 1000 RPM
Mass	320 kg (705 lbs)
Gear barrel	Synchronized




Table 1-2 Mechanical specifications


Measurements of SC-650

Width	655 mm	(25.8")
Height	1370 mm	(53.9")
Depth	1120 mm	(44.1")

Measurements of shipping box

Width	780 mm	(30.7")
Height	1480 mm	(58.3")
Depth	1480 mm	(58.3")

Ambient temperature range during operation	-10°C to +50°C (14°F to 122°F)
Ambient temperature range during storage	-40°C to +70°C (-40°F to 158°F)

 When using water the ambient temperature must never fall below 0°C (32°F).

1.3 Options

The SC-650 has got one option for water supply. The standard SC-650 does not come with water connection.

1.3.1 Water connection

Inside the cover of the gear barrel there is a sprinkle system connected to an external water connection. The water connection comes with its counterpart and fits a standard ½ inch hose. At the connection that is fitted near the handle there is a tap to adjust the flow.



Figure 1-1 Standard SC-650

1.4 Tools



The machine must be equipped with tools approved by Scanmaskin Sweden AB before operation.



See “Grinding guide” for information about available tools and “4.11 Changing tools” for information about how to change the tools.

The tools are fitted using the Scan-On system for easy fitting.

Available tools

- SC-Tiger PCD
- Diamond tools



Figure 1-2 Scan-On plate with tools fitted.

1.5 Range of application



SC650 is exclusively designed to process horizontal surfaces. SC650 must not be used for other purposes than stated in this user guide. The manufacturer will not be liable for damage or injury resulting from incorrect usage of SC650. Failure to follow the directions in this user guide will void the warranty.

Typical applications

- Removal of old coatings, carpets, putty from hard surfaces
- Removal of undulated concrete surfaces
- Preparation of the surface for coatings
- Polishing of the surface
- Removal of coating defects
- Removal of glue residues

1.6 Scope of supply

The following parts are included with the standard SC-650 grinding machine:

- Key to electrical cabinet
- User guide

If the machine has got a water connection, the counter part for the connection will be included and fit in the water connection near the handle.

Machines sold outside of Europe will be either equipped with a local standard connector for the power inlet or the mating connector will be included and fitted at the main power inlet.



Read “2.6 Electrical safety” before connecting any included connectors.

1.7 Overview

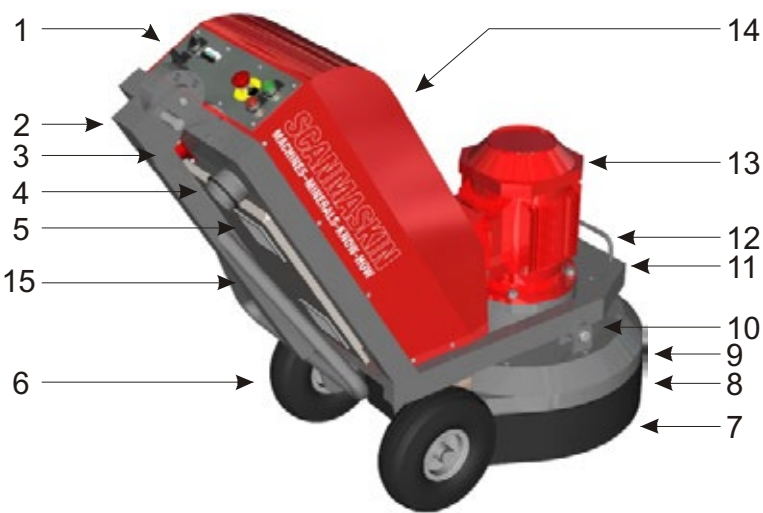
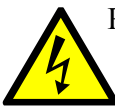


Figure 1-3 Overview of SC-650

Item	Description	Reference
1	Control panel	4.3Control panel
2	Handle	560006
3	Power inlet	1.1Electrical specifications
4	Dust collector connection	6.0 Spare Parts
5	System fan	570151
6	Wheel	560121
7	Grinding head	4.11Changing tools
8	Dust cover	560008
9	Cover	560007
10	Bolt	560109
11	Frame	560005
12	Lift handle	3.3Lifting
13	Motor	1.1Electrical specifications
14	Cover	560105
15	Electrical cabinet	1.1Electrical specifications

Table 1-3 Machine parts overview

2 Safety Regulations



Read this entire chapter carefully! Failure to comply with safety regulations may result in serious injuries or damages.

2.1 Legend

	Notation regarding safety
	Notation regarding electrical safety
	Notation regarding safety during transport
	Tipping hazard
	See reference

2.2 Safety precautions



Any machine, if it is not used according the regulations, may be hazardous for operating, setting-up and service personnel. The operating authority is responsible for compliance with the safety regulations during operation and maintenance, and for the use of safety devices supplied with the machine, as well as the provision of appropriate additional safety devices!

Eye and ear protection must be worn at all times.

Never operate the machine when it’s not in its upright position.

Make sure there is no debris in the work area.

Check the work area for screws or other hard objects in the concrete. Don’t use the machine if there are any foreign objects stuck into the surface. Such objects must be removed prior to operation of machine.



Read “2.3Organizational measures” and “2.5Safety regarding operation of machine” thoroughly before operation!

2.3 Organizational measures



The user guide is to be kept near the location where the machine is being operated and must be within reach at all times.

In addition to this user guide general and legal regulations regarding accident prevention and environmental protection must be complied with as per local regulations.

Such duties may, for example, relate to the handling of hazardous substances, or to the provision and wearing of personal protection equipment, as well as compliance with traffic regulations.

The user guide must be supplemented by other instructions, including the duty to supervise and report incidents relating to particular working practices, for example work organization, work procedures and personnel safety.

Personnel entrusted with working with the machine must read the User Guide before starting work, in particular the “2Safety Regulations” chapter. To read these instructions after work is commenced is too late. This particularly applies to incidental activities such as setting up the equipment, carrying out maintenance work or training staff to work with the machine.

From time to time the working practices of the operators are to be checked by a supervisor especially to the items regarding awareness of safety and hazards.

Operators must tie back long hair, and not wear loose clothing or jewellery including rings. There is a risk of injury through items getting caught, or being drawn into moving machinery.

Eye and ear protection must be worn at all times!

Use personnel protection equipment if necessary or required by local regulations! Take notice of all safety and hazard notices on the machine!

All safety and hazard notices at or on the machine must be kept complete and legible!

If safety-critical changes occur to the machine or its working method, the machine must be shut down immediately! The cause of the fault must be established, and rectified.

Changes, add-ons or conversion to the machine, which might impair safety, must not be made, without the manufacturer’s permission!

This applies in particular to the fitting and adjustment of safety devices.

Spare parts must comply with the technical requirements specified by the manufacturer. This is always guaranteed if original spare parts are used.

Intervals for recurring checks and inspections specified in this User Guide must be complied with!

To perform maintenance work correctly it is imperative to be equipped with the proper tools for the task in question.

Repairs may only be made by Scanmaskin Sweden AB certified service technicians.

Some grinding work may generate sparks under certain circumstances. Personnel working with the machine must therefore be aware of the risk of fire and how to handle a fire situation properly.

Do not use the machine in areas with highly flammable and/or explosive materials.

2.4 Personnel selection and qualification

Fundamental duties:

- Work on the machine may only be undertaken by trained personnel.
- Specify clearly the responsibilities of personnel for operation, setting up, servicing and maintenance work!
- Make sure that only authorized personnel operate or work on the machine!
- Define responsibilities of the machine operator, with regard to traffic safety regulations, and inform him not to take instructions from third parties who may not be complying with the local safety requirements.
- Personnel, who are being trained to operate equipment, may only use the machine under constant supervision of an experienced person!
- Work on electrical equipment may only be undertaken by a skilled electrician or by trained persons under the supervision of a skilled electrician, as well as in accordance with the local electrical engineering regulations.

2.5 Safety regarding operation of machine



Do not allow any method of working that impairs safety!

Recognized official procedures have to be used to ensure the machine is operated in safe and best conditions.

Only operate the machine when all safety devices and related safety equipment are present and operational!

Check the machine visually for any damage and defects at least once a day.

In the event of operational malfunctions the machine must be shut down immediately and secured!

Secure the work area around the machine in public areas providing a safety distance of at least 10 m (3.3 ft) from the machine.

Faults must be immediately rectified.

Carry out the switch on, and switch off operations in accordance with this user guide.

Before switching on the machine make sure that no-one can be endangered when the machine starts up.

Never operate the machine when not in its upright position.

Do not switch off or remove the exhaust and or the ventilation devices whilst the machine is running!

All persons in the proximity of the machine must wear ear and eye protection as well as safety shoes. In addition the machine operator must wear close-fitting protective clothing.

Only use extension cables that are sized and marked in accordance with the overall power consumption of the machine and the valid VDE guidelines.



See “2.6Electrical safety” for further information.

Make sure there is no debris in the work area.

Check the work area for screws or other hard objects in the concrete. Don't use the machine if there are any foreign objects stuck into the surface. Such objects must be removed prior to operation of machine

2.6 Electrical safety



The power source must be equipped fuses according to the table in “1.1Electrical specifications”. All cables used must be marked and rated according to the fuses used. Never connect the machine to a power source that does not provide protective earth!

Work on electrical equipment may only be undertaken by a skilled electrician or by trained persons under the supervision of a skilled electrician as well as in accordance with the local electrical engineering regulations.

Use only extension cables, that are used for extending the main cable, that are sized and marked in accordance with the overall power consumption of the machine and the valid VDE guidelines.

The electrical equipment for the plant must be inspected regularly. Defects such as loose connections or scorched cables must be rectified immediately. Call as skilled electrician or out customer services.

A second person must be in attendance whilst the electrical engineer is working on the equipment.

The work area must be secured against any third party entering the work area. Follow local electrical engineering regulations while working on the machine. Never leave a machine unattended. Use only tools that are insulated against electricity.

Only start work after you are familiar with the electrical engineering regulations that apply to the local area.

Only use voltage seekers that comply with the regulations when troubleshooting. From time to time check voltage seekers to ensure that they are operationally efficient.

2.6.1 Cables



Only use cables that are marked and rated according to the specifications in “1.1Electrical specifications”. Don't use excessive length of the cables. If a very long cable is needed we recommend that you use a cable rated for more current and connect it to a distribution central near the machine. Never lay the cable in a loop when operating the machine, this will cause the cable to heat up and may cause fire. See “Figure 2-1” for explanation.

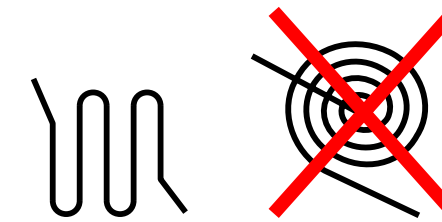
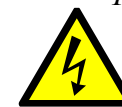


Figure 2-1 Recommended way to handle excessive cable length.

2.6.2 Using a generator



The generator must be equipped with protective earth and operated in accordance with the current EN-VDE directives (this applies to the protective earth conductor in particular) in order to ensure that all safety devices are functioning and eliminate possible damage to electrical components.

2.7 Definition of the “Safety off position”

The machine is in a safe condition where it cannot be any hazard.

How to set the machine in the Safety off position:

1. Switch off the machine
2. If a dust collector is used, switch it off
3. Wait for all drives to come to a complete stop
4. Disconnect the main power
5. Secure against unintended restart



Always disconnect the main power at the machine end to be able to prevent other persons from accidentally reconnect the main power while working on the machine.

2.8 Safety regarding maintenance

Set the machine into the Safety off position before beginning any work on the machine.



See “2.7Definition of the “Safety off position””.

Never work on the machine while power is still connected!
All parts must have come to a complete stop before beginning any work!



When the machine is lying down on its back it might tilt to it’s upwards position. Take extra care to prevent this from happening to ensure that no injuries or damages occur.



When the machine has been operated the segments, Scan-On plates and other parts on the gear barrel may be hot. Take extra care to prevent burn injuries.

Adjustment, servicing and inspection work on the period of time limits, specified in this User Guide as well as any information on the replacement or parts and equipment must be undertaken and/or complied with!

These activities may only be undertaken by qualified personnel.



The machine must not be connected to any power source while cleaning.



See “2.7Definition of the “Safety off position”” for further information.

2.9 Safety regarding transport



Always remove the tools before transport. The tools may fall of or damage the surface the machine is transported along.

2.9.1 Manual transport



*When transporting the machine manually be observant about ramps and/or edges.
Follow local traffic regulations for the work site to prevent accidents. Failure to comply with these regulations may cause injuries or damages.*

2.9.2 Lifting



*The machine must be secured according to local safety regulations before lifted.
No person is allowed beneath a lifted machine! The machine must be lifted according to the instructions in “3.3Lifting”Observe the machines point of balance before lifting! Failure to comply with these regulations may cause injuries or damages. Only use straps approved for the weight and circumstances!*


2.9.3 Inside vehicles



Secure the machine according to local transport safety regulations before transporting the machine inside a vehicle.

3 Transport


3.1 Precautions

 Read “2.9Safety regarding transport” before attempting to transport the machine.

3.2 Manual transport

- Detach the tools according to the instructions in “4.11Changing tools”.
- Push the handle downwards to lift the gear barrel about 10 cm (4”) from the ground.
- Push the machine in desired direction.

3.3 Lifting

 Before attempting to lift the machine, read “2.9.2Lifting”

- Detach the tools according to the instructions in “4.11Changing tools”.
- Fasten the straps used for lifting at the two handles as shown in “Figure 3-1”.
- Lift the machine.

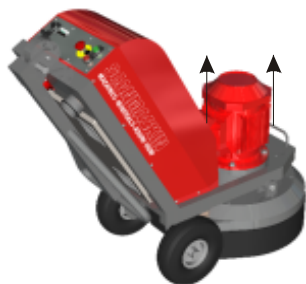



Figure 3-1 Lifting points

3.4 Inside vehicles

- Detach the tools according to the instruction in “4.11Changing tools”.
- Secure the machine inside the vehicle.

4 Operation

4.1 Precautions

 Any machine, if it is not used according the regulations, may be hazardous for operating, setting-up and service personnel. The operating authority is responsible for compliance with the safety regulations during operation and maintenance, and for the use of safety devices supplied with the machine, as well as the provision of appropriate additional safety devices!


Never operate the machine without proper tools.

Eye and ear protection must be worn at all times.

Never operate the machine when it’s not in its upright position.

Make sure there is no debris in the work area.

Check the work area for screws or other hard objects in the concrete. Don’t use the machine if there are any foreign objects stuck into the surface. Such objects must be removed prior to operation of machine.

 Read “2Safety Regulations” before operating the machine.

4.2 Operation of machine

The gear barrel has got three grinding heads that rotates in the opposite direction of the gear barrel. Each grinding head is equipped with a Scan-on plate where each plate hold the tools used. See “Figure 4-1”.



Figure 4-1 Illustrates the rotation of the grinding heads versus the gear barrel.

4.3 Control panel

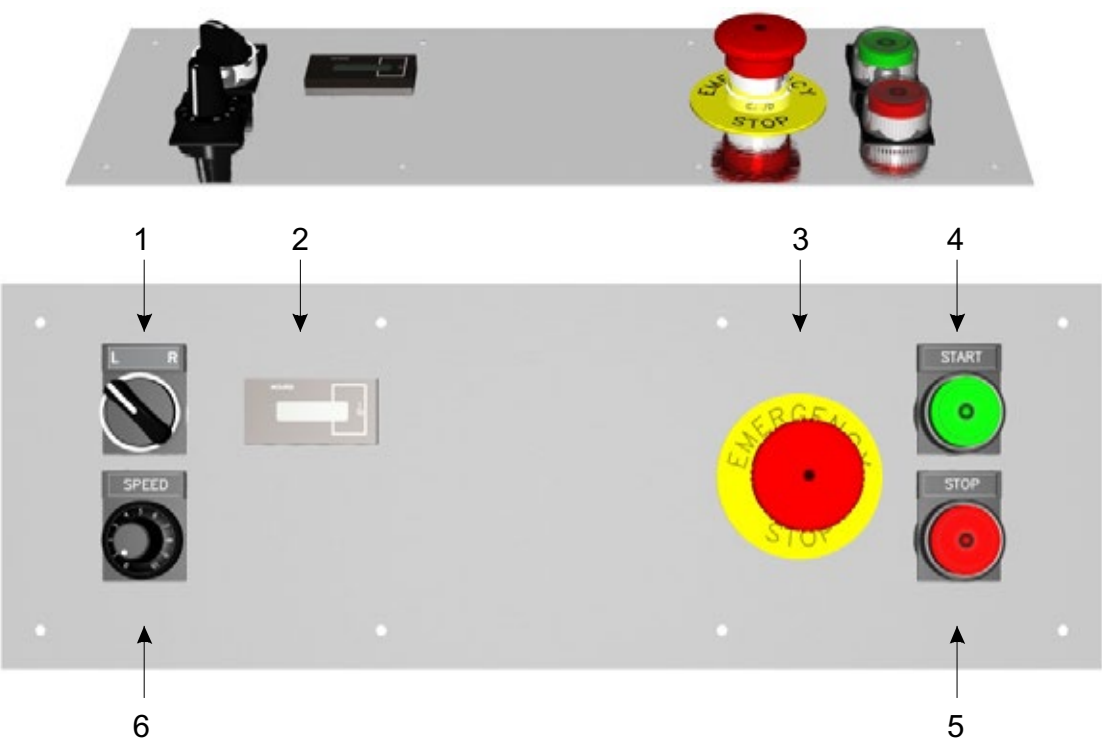
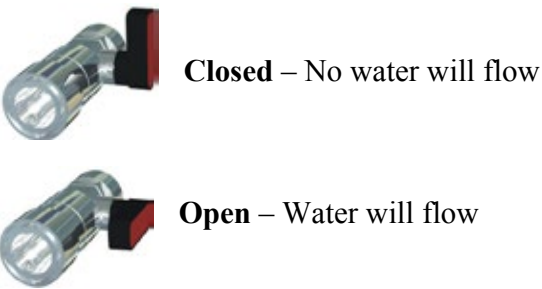


Figure 4-2 Control panel of SC-650.

Item	Text	Description	Partnumber
1	L/R	Selects rotation direction	596001
2	HOURS	Hour meter	570028
3	EMERGENCY STOP	Emergency stop	596003
4	START	Starts the machine	596006
5	STOP	Stops the machine	596007
6	SPEED	Speed of rotation	596008 + 596009

Table 4-1 Description of the control panel.

4.4 Water connection



4.5 Start up

See ”4.1Precautions” before starting the machine.

How to start the machine

- Make sure that the power plug and hoses for dust collector and water (if used) are connected to the machine.
- Turn on the dust collector if used.
- Push the handle downwards to lift the gear barrel about 10 cm (4”) from the ground.
- Make sure that the “EMERGENCY STOP” button (3) is in its upper position. If not, release it by turning it clock wise until it rises and press the “STOP” (5) button once to reset.
- Press the “START” (4) button.
- Lower the gear barrel down to the floor.

4.6 Stop

How to stop the machine

- Press the “STOP” (5) button.
- Wait for the machine to come to a complete stop before letting go of the handle.
- Turn off the dust collector if used.

4.7 Adjusting grinding speed

Turn the “SPEED” knob (6) clock wise to increase the grinding speed and counter clock wise to decrease it. See “1.2Mechanical specifications” for the rotation speed range.

4.8 Change grinding direction

Use the “L/R” switch (1) to select grinding direction. The machine will automatically come to a complete stop and restart in the selected direction.


4.9 Safety off position

When working on the machine, either maintenance or tool change, the machine must be set to the “Safety off position”. See “2.7Definition of the “Safety off position”” for further information.

4.10 Grinding

Refer to “Grinding guide” for instructions and information about grinding.

4.11 Changing tools

 Before changing tools, read “2.8Safety regarding maintenance”.

This illustration shows how to change the tools.

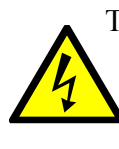


Figure 4-3 How to fit the diamond segments on the Scan-On plate.

- 1 Insert the segment at the widest part of the slot
- 2 Push the segment outwards
- 3 The segment is now fit on the Scan-On plate

To make sure that the tool is secured, use a small plastic hammer and slightly hit the tool outwards. In reverse this technique can be used to loosen tools that are stuck.


4.12 Using with generator


 The generator must be equipped with protective earth and operated in accordance with the current EN-VDE directives (this applies to the protective earth conductor in particular) in order to ensure that all safety devices are functioning and eliminate possible damage to electrical components.

5 Maintenance


5.1 Precautions


Set the machine into the Safety off position before beginning any work on the machine.

 See “2.7Definition of the “Safety off position””.

 Read “2.6Electrical safety” before beginning any maintenance work.


Never work on the machine while power is still connected!
All parts must have come to a complete stop before beginning any work!

 When the machine is lying down on its back it might tilt to it’s upwards position. Take extra care to prevent this from happening to ensure that no injuries or damages occur.

 When the machine has been operated the segments, Scan-On plates and other parts on the gear barrel may be hot. Take extra care to prevent burn injuries.

Adjustment, servicing and inspection work on the period of time limits, specified in this User Guide as well as any information on the replacement or parts and equipment must be undertaken and/or complied with!

These activities may only be undertaken by qualified personnel.

 The machine must not be connected to any power source while cleaning.

5.2 Daily inspection prior to operation

- Inspect the following items prior to operation
- Inspect the wheels for damage.
 - Inspect the grinding heads. Dirt between the Scan-On plate and the grinding hub can impair the flexibility of the grinding head.
 - If any screws appears loose, tighten them.
 - Look over the machine for any other damage.

5.3 Maintenance and inspection list

Daily	<ul style="list-style-type: none">▪ Inspect the wheels▪ Inspect the grinding heads▪ Look for any other damage
12 hours after service	<ul style="list-style-type: none">▪ Tighten all screws

5.4 Grinding disc replacement / assembly

Follow these steps to replace the Scan-On plate

- Make sure the machine is in its “Safety off position”
- Tilt the machine backwards and secure it.
- Remove any tools used.
- Loosen the three screws holding the Scan-On plate.
- Replace the Scan-On plate.
- It’s recommended that new screws are used to fasten the replacement Scan-On plate.
- It’s also recommended that copper paste is used on the surface of the screw hole at the Scan-On plate.
- Tighten all screws by hand and make sure that they are secured.

5.5 Cleaning the machine

Before starting to clean the machine, make sure it is in its ”Safety off position”

The power must not be connected while cleaning the machine.

Do not use highly pressurized water to clean the machine.
Water and soap is recommended.

5.6 Trouble shooting

5.6.1 Common faults

Symptom	Cause	Correction	A ⁵
The machine won’t start	▪ There is a power failure from the power supply	▪ Inspect the fuses in the worksites fuse box ▪ Inspect cables ▪ Measure that all three phases are present and at full voltage near the machine	O E E
	▪ The emergency stop button is depressed	▪ Release the emergency stop button.	O
	▪ Internal error	▪ If possible, read the alarm or fault code present at the display inside of the electrical cabinet. Alarm codes are formatted as “Axxxx” where “x” is the number. Fault codes are formatted as “Fxxxx”. ▪ Contact Scanmaskin Sweden AB	O
The machine is weak and might stop when on the ground.	▪ One of the three phases are missing from the power supply	▪ Inspect the display on the inverter for any alarm code ▪ Inspect the fuses in the worksites fuse box ▪ Inspect cables ▪ Measure that all three phases are present and at full voltage at the cable end near the machine.	O O E E
	▪ There is a voltage drop at the power supply	▪ Make sure that the cable is not too long. If the cable should be too long, use a cable with higher rating to a distribution box nearer the machine.	O
The machine vibrates a lot	▪ The grinding speed is too high	▪ Lower the speed	O
	▪ The tools are damaged	▪ Inspect the tools	O
		▪ Change the tools if needed	O

Table 5-1Common faults

⁵ See access table ”Table 5-3”

5.6.2 Error codes

Code	Description	Cause	Correction	A ⁶
A2001	Over current	▪ One of the three phases is missing from the power supply ▪ There is a voltage drop at the power supply	▪ Inspect the fuses in the worksites fuse box ▪ Inspect cables ▪ Measure that all three phases are present and at full voltage at the cable end near the machine ▪ Make sure that the cable is not too long. If the cable should be too long, use a cable with higher rating to a distribution box nearer the machine	O O E E
		▪ The environmental temperature is too high. When the temperature is above 40°C (104°F) the inverter will decrease its maximum output current	▪ Inspect the ventilation fans ▪ Inspect the filters to the fans	O O
A2002	Over voltage	▪ The power supply has got voltage transients	▪ Inspect the power source	E
A2003	Under voltage	▪ One of the three phases is missing from the power supply ▪ There is a voltage drop at the power supply	See A2001	
A2006	Speed reference error	▪ The potentiometer on the control panel is damaged	▪ Inspect the potentiometer ▪ Replace if necessary	S S
A2009	Over temperature	▪ The internal temperature in the inverter is above 120°C (248°F). This could be caused by faulty ventilation in the electrical cabinet.	▪ Inspect the ventilation fans ▪ Inspect the filters to the fans ▪ Contact Scanmaskin Sweden AB	O O
A5001	Internal error	Contact Scanmaskin Sweden AB		
F0001	Over current	See A2001		
F0002	Over voltage	See A2002		
F0003	Over temperature	▪ The internal temperature in the inverter is above 135°C (275°F). This could be caused by faulty ventilation in the electrical cabinet.	See A2009	
F0004	Short circuit in motor	▪ The cable to the motor has been damaged ▪ The motor has been damaged	▪ Inspect the motor cable ▪ Inspect the motor connection ▪ Contact Scanmaskin Sweden AB	E E
F0006	Under voltage	See A2003		
F0007	Speed reference error	See A2006		
F0016	Protective earth failure	▪ The cable to the motor has been damaged ▪ The motor has been damaged ▪ Water have entered the motor	▪ Inspect the motor cable ▪ Inspect the motor connection ▪ Contact Scanmaskin Sweden AB	E E
F0018	Internal error	Contact Scanmaskin Sweden AB		
F0021				
F0022	Power supply phase fault	See A2003		
F0034	Motor phase fault	▪ One of the three phases to the motor is missing. This could be due to damage to the motor cable or to the motor.	▪ Inspect the motor cable ▪ Inspect the motor connection ▪ Contact Scanmaskin Sweden AB	E E

Table 5-2Error codes

Alarm codes starts with “A” and fault codes starts with “F”. The machine will be operational if an alarm code is present but not when an fault code is present.

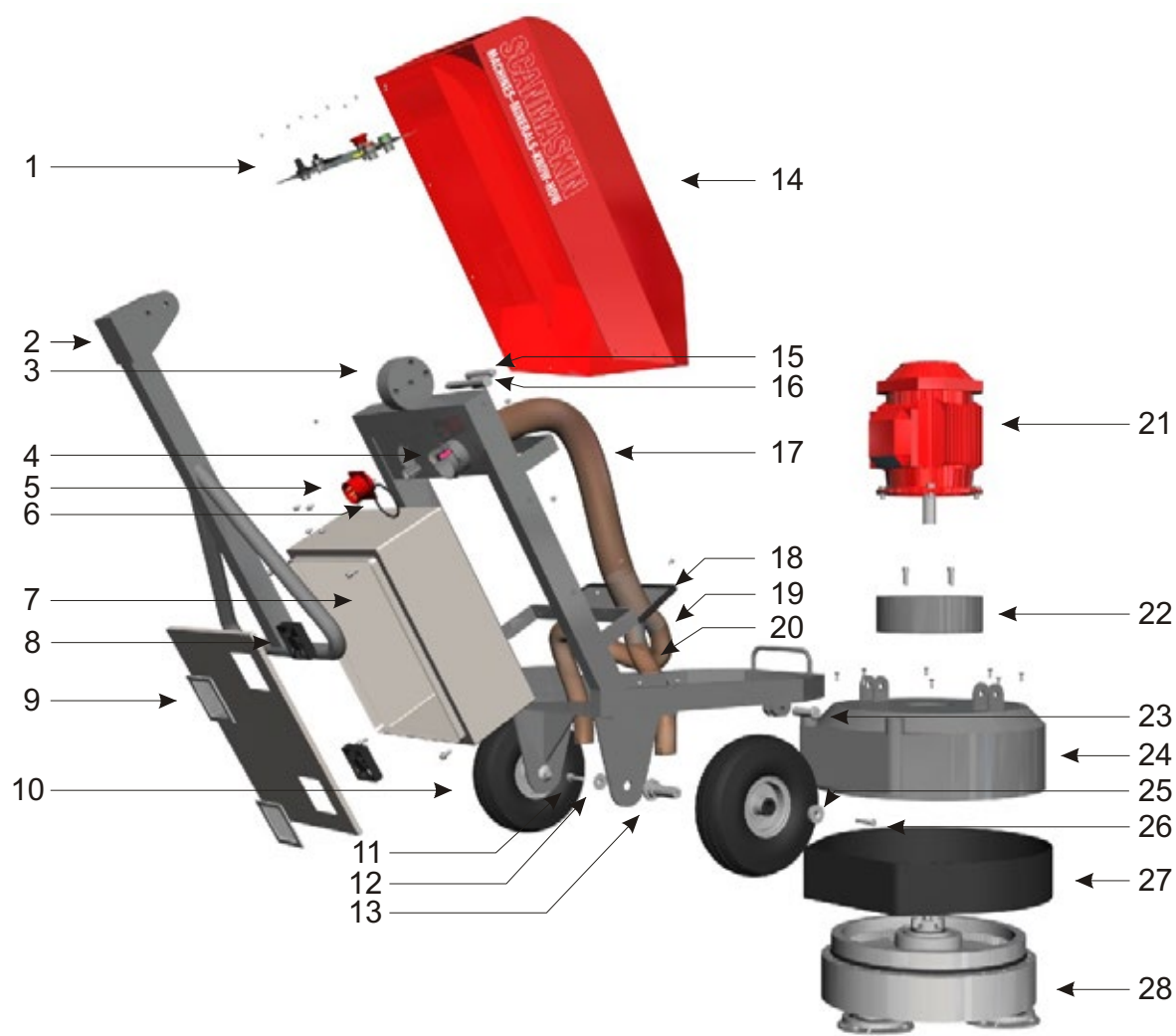
The following table describes the access for the task.

Abbreviation	Person
O	Machine Operator
E	Electrician
S	Scanmaskin certified service technician

Table 5-3 Access rights for different persons

⁶ See access table ”Table 5-3”

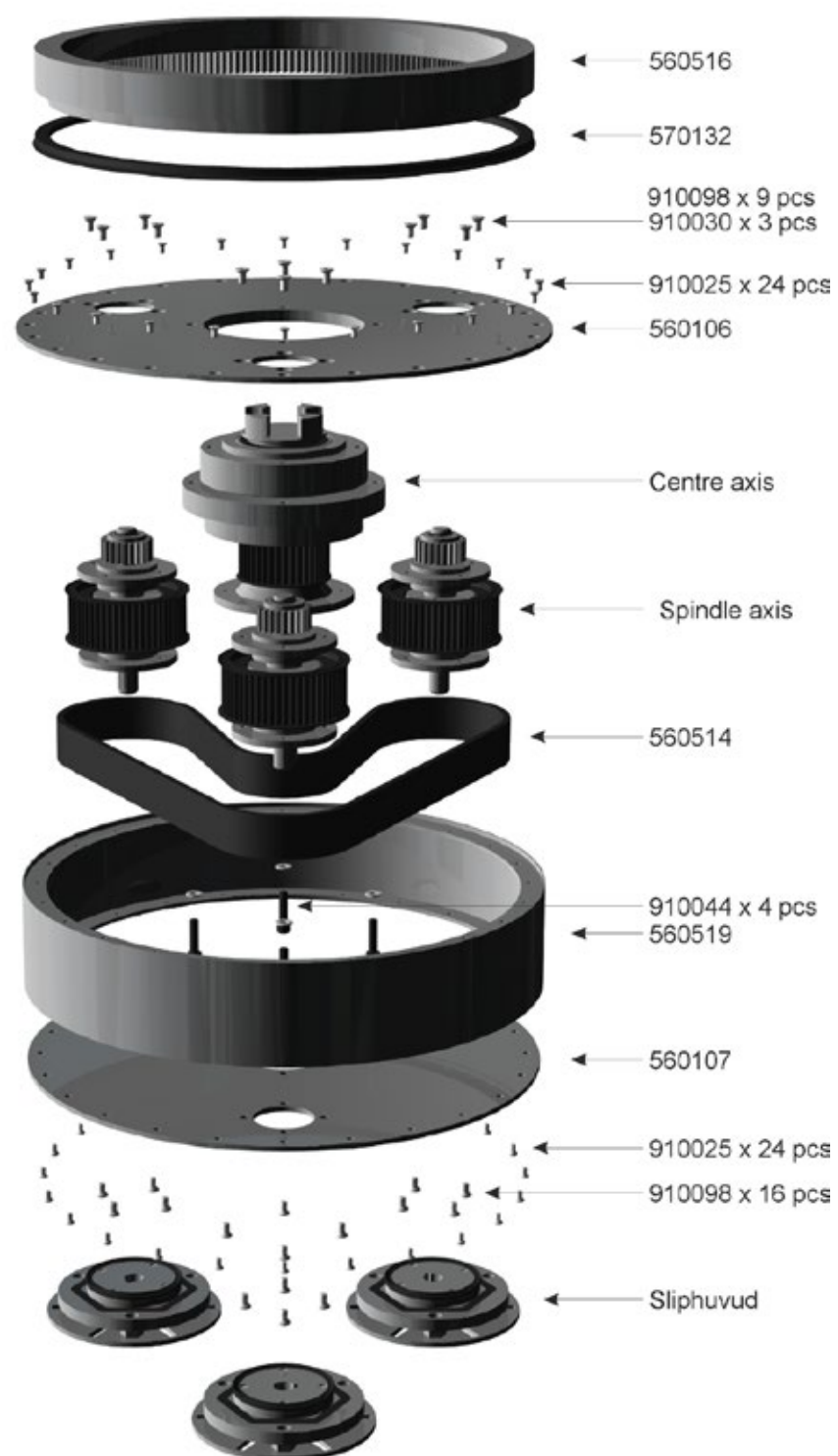
6 Spare Parts



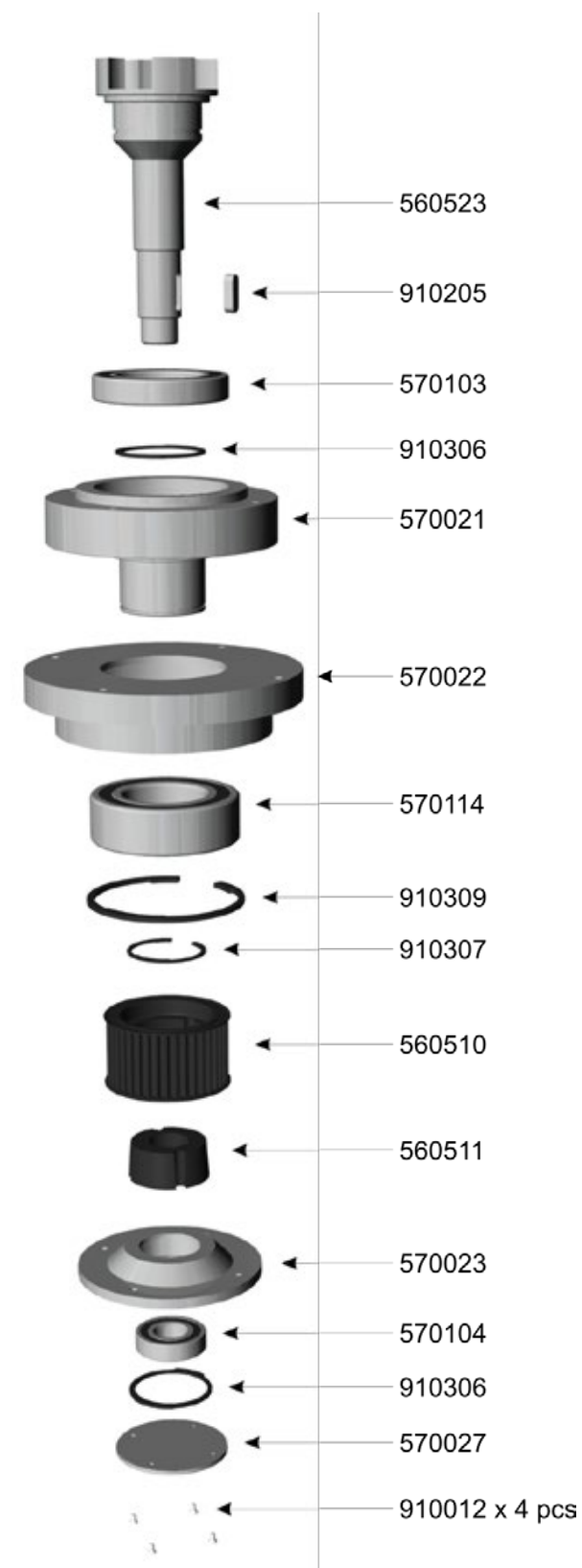
No.	Part	Partnumber
1	Control panel	4.3 Control panel
2	Handle	560006
3	Frame	560005
4	Water inlet (optional)	911008
5	Power inlet	910842
6	O ring	780049
7	Electrical cabinet	560122
8	Fan	570151
9	Fan grid	530036
10	Wheel	560121
11	Bolt	910052
12	Washer	910179
13	Wheel axis	560108
14	Cover	560105
15	Handleaxis	570034
16	Handle lock pin	570039
17	Internal dust hose	570171
18	Rubber seal	
19	Left dust hose	570170
20	Right dust hose	570170
21	Motor	560040
22	Motor distance	560009
23	Lock pin	560109
24	Cover	560007
25	Washer	560110
26	Bolt	910030
27	Dust cover	560008
28	Gear barrel	S3 - 560500

Table 7-1Spare parts SC-650

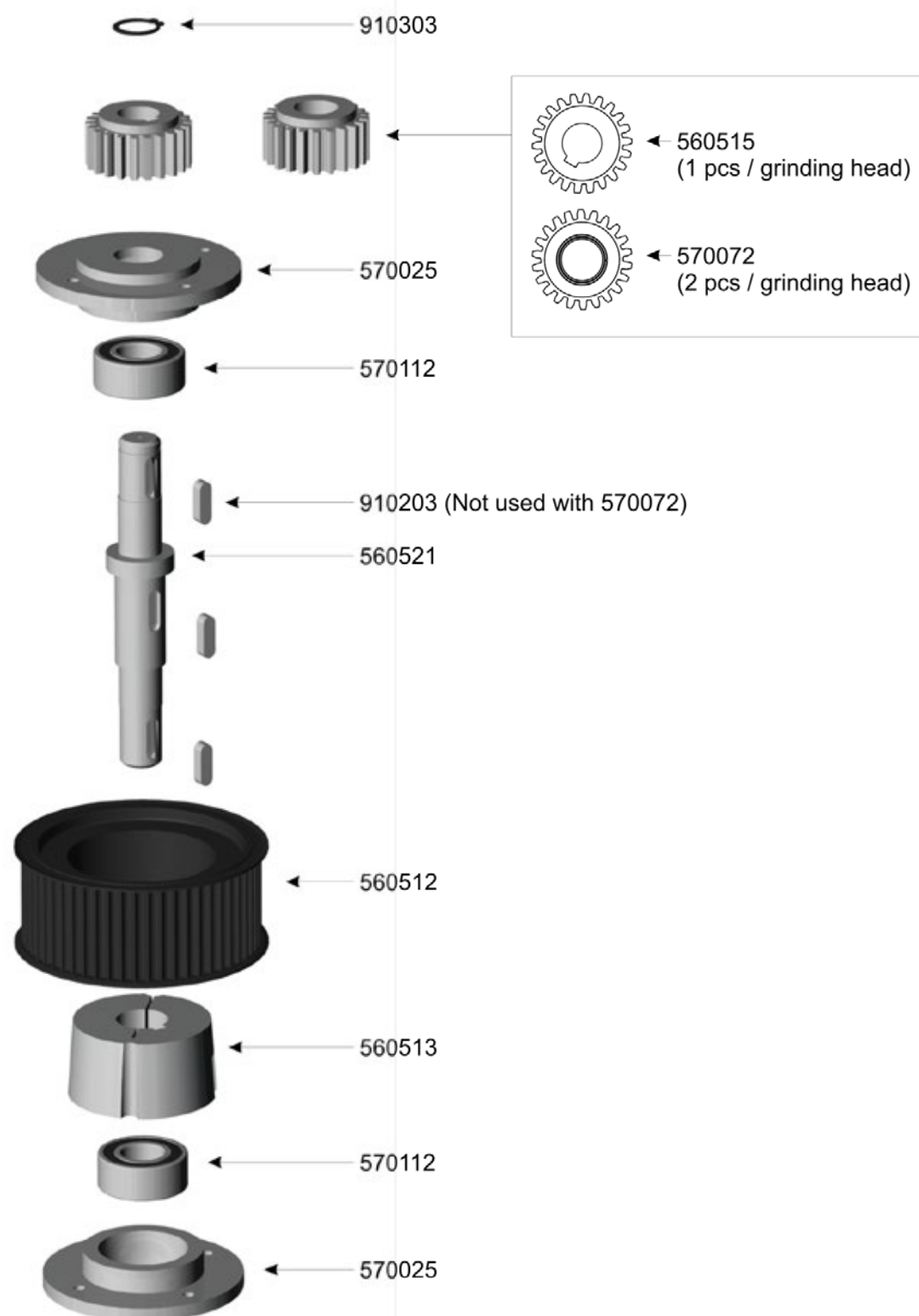
6.1 Gear barrel



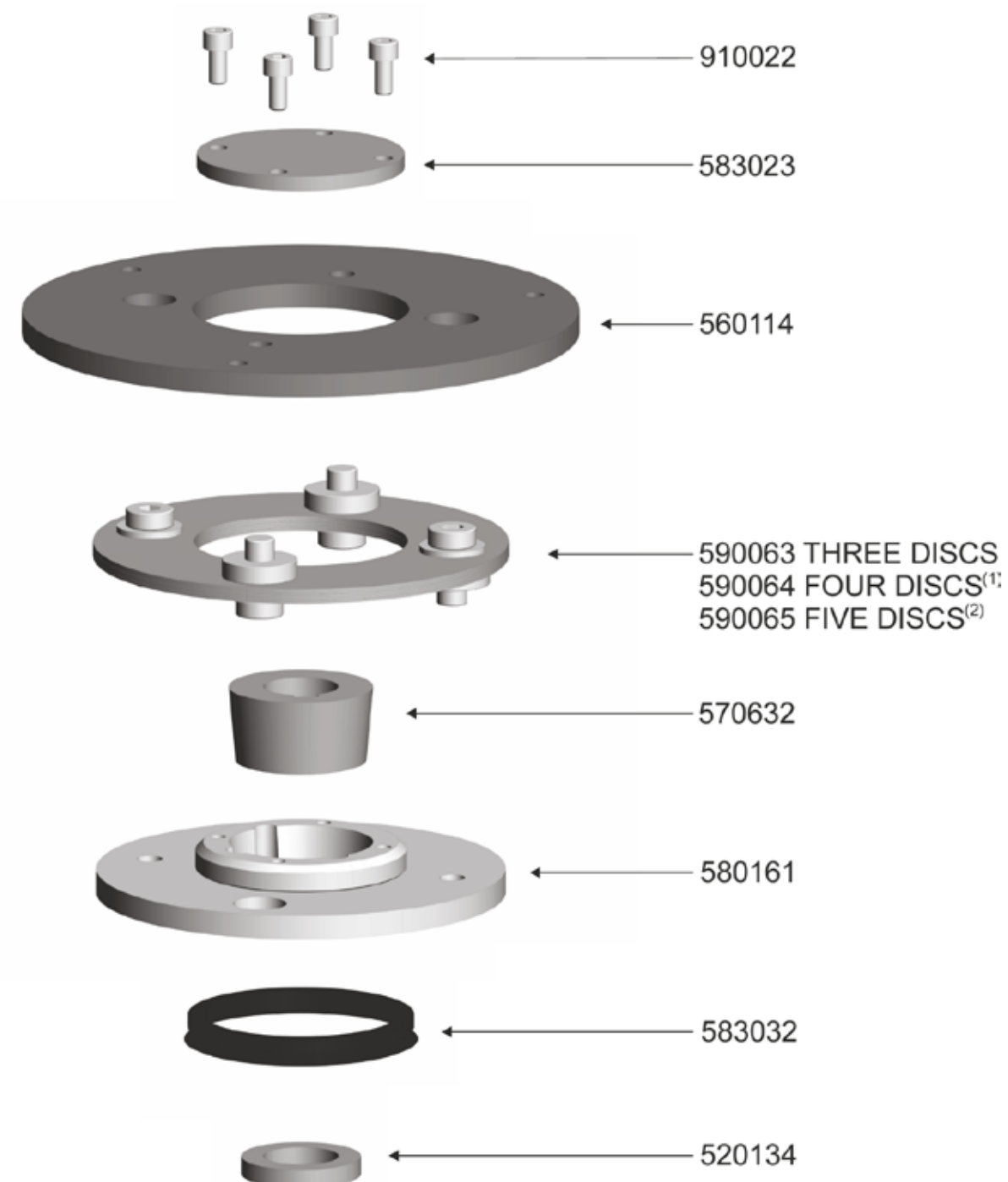
6.2 Center axis



6.3 Grining spindle



6.4 Grinding head



(1) Standard SC-650
(2) Standard SC-700

Art no.	Description	Qty.
560106	Cover plate, upper	1
560107	Cover plate, lower	1
560510	Belt pulley, center	1
560511	Belt pulley bush, center	1
560512	Belt pulley, grinding spindle axis	3
560513	Belt pulley bush, grinding spindle axis	3
560514	Toothed belt	1
560515	Gear wheel with parallel key hub	1
560515	Gear wheel with parallel key hub	1
560516	Gear rim	1
560519	Gear barrel	1
560521	Grinding spindle axis	3
560523	Center axis	1
570021	Bearing shell, center, fixed	1
570022	Bearing shell, center, upper rotating	1
570023	Bearing shell, center, lower rotating	1
570024	Center axis	1
570025	Bearing shell, grinding spindle axis	6
570027	Cover plate, center	1
570072	Bushed gear wheel	2
570080	Grinding spindle hub	3
570081	Distance nipple Scan on	9
570082	Fastener, grinding spindle hub	3
570084	Cover plate, grinding spindle	3
570085	Distance plate, grinding spindle hub	3
570087	V-ring	3
570103	Ball bearing	1
570104	Ball bearing	1
570112	Ball bearing	6
570114	Roller bearing	1
570132	V ring	1
590013	Scan-on plate	3
910012	Hexagon socket countersunk head screw M8 x 16	4
910012	Hexagon socket countersunk head screw M4 x 8	4
910025	Hexagon socket countersunk head screw M8 x 12	60
910030	Hexagon socket countersunk head screw M8 x 16	30
910032	Hexagon socket countersunk head screw M8 x 20	12
910033	Hexagon socket head cap screw M8x22	12
910044	Hexagon socket head cap screw M10x40	4
910196	Toothed lock washer M8	12
910203	Parallel key 25x8x7	8
910205	Parallel key 30x10x8	1
910303	Circlip	3
910306	Circlip	2
910307	Circlip	1
910309	Circlip	1

Table 6-2Spare parts grinding head SC650

6.1.1 Electrical schematics

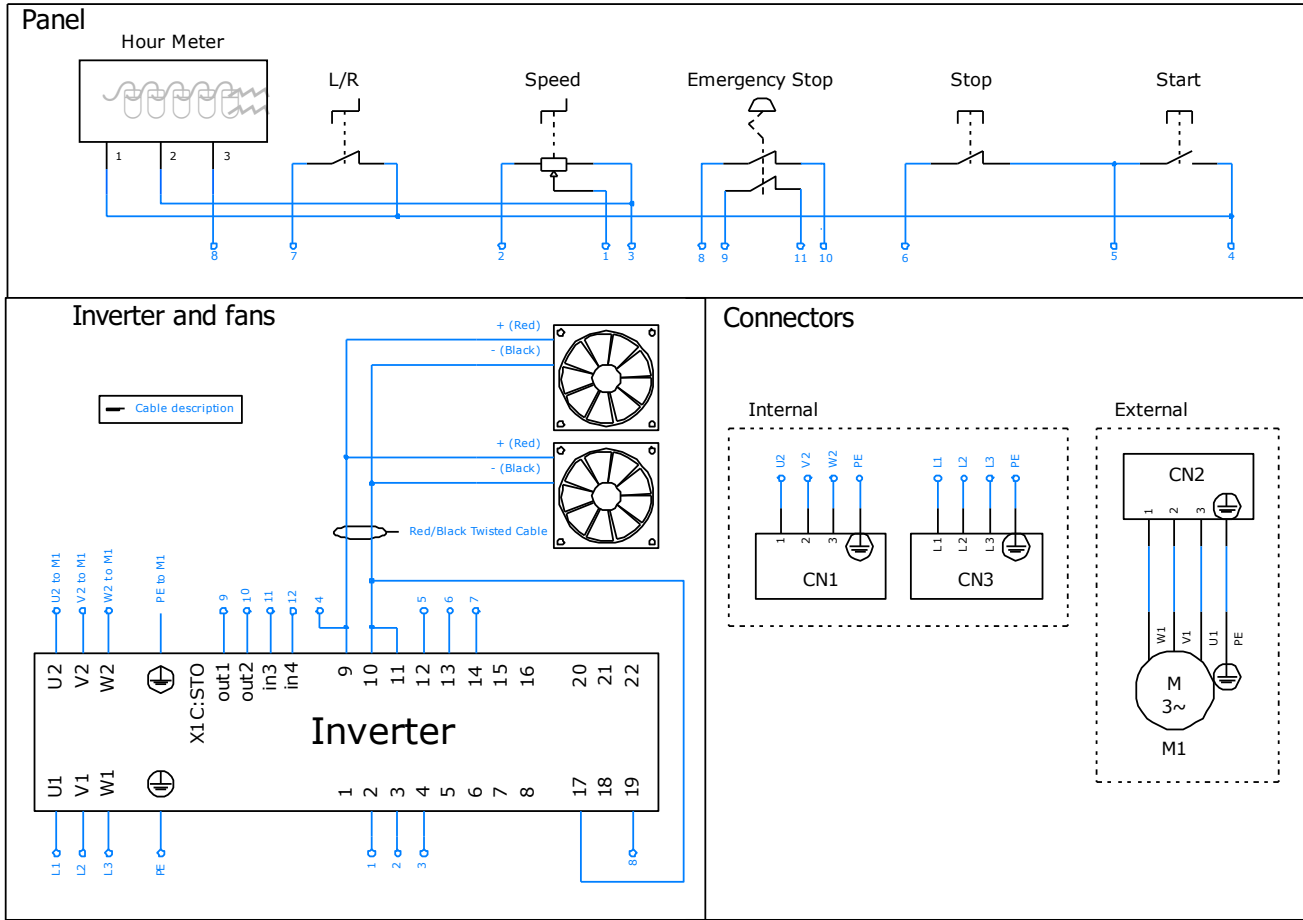


Figure 7-4Electrical schematic SC-650

Component	Description	Art. No.
S1	Hour meter	570028
S2	Rotary switch	596001
S3	Potentiometer assembly	596008
S4	Red push button	596007
S5	Green push button	596006
S6	Emergency stop	596003
Fan 1-2	Cabinet fan	570151/530036
U1	Inverter	See table 1-1
CN3	Power inlet	See table 1-1
	Motor cable	530131
CN1	Motor connector chassis	570157/570158
CN2	Motor connector cable	570156/570159

Table 7-5Electrical spare parts

7 Warranty

This product from Scanmaskin Sweden AB comes with a twelve month warranty. If the product does not function satisfactorily during this period, Scanmaskin will return the product to full working order for normal use which the product is intended for – with no charge for labour or spare parts, according to the following conditions:

- 1. The warranty only applies to persons that have legal right to the equipment during the warranty period.
- 2. The manufacturer's undertaking is limited to the repair of defective parts or the replacement of these according to the manufacturer's assessment. Costs and risks for transport as well as dismantling and reinstallation of the product / products and other direct or indirect costs, associated with the repair in question, are not covered by this warranty.
- 3. Periodic inspections, adjustments, maintenance work and changes are not covered by the warranty.
- 4. Scanmaskin is not liable for any damages to grinding discs or other similar equipment.
- 5. The warranty only applies to material and design deficiencies and does not apply in the following cases:
 - a. Damage caused through accidents, carelessness, changes, use of spare parts or grinding tools that are not original components, or incorrect use and installation.
 - b. Damage caused by lightning, water, fire, vandalism, incorrect mains voltage, incorrect ventilation or other causes that lie outside of the manufacturer's control.
- 6. Scanmaskin reserves the right to modify the design – or make improvements without obligation to change previously manufactured products.
- 7. Scanmaskin reserves the right to modify the design – or make improvements without obligation to change previously manufactured products.
- 8. All warranty repairs must be carried out by Scanmaskin or by a Scanmaskin accredited repair workshop. Costs for repairs, carried out by an unauthorised workshop, will not be reimbursed by Scanmaskin. If such repairs damage this product these are not cover by the warranty agreement.

8 EU Declaration

Declaration of conformity CE

Manufacturer	Scanmaskin Sweden AB
Address	Heljesvägen 10 437 36Lindome Sweden
Product	Grinding machine
Name	Scan Combiflex 650
Serialnumber	_____
Standards used including number	
Machine directives	2006/42/EG
EMC	2004/108/EC
LVD	2006/95/EG
Harmonized standards	
Safetyofmachinery	EN ISO 12100:2010
Safetyofmachinery	EN ISO 60204-1
Safe Torque Off	EN 61800-5-2
Place of issue	Lindome / Gothenburg / Sweden
Name of authorized representative	Claes-Göran Bergstrand
Position	Managing Director

Declaration

We declare that as the authorized representative, the above information in relation to the supply / manufacture of this product is in conformity with the stated standards and other related documents following the provisions of EEC directives.

Signature of authorized representative:

9 Alphabetical reference

A

Application
 range of 43
 typical..... 43

C

Cleaning 58
Contact information 72
Control panel..... 54

E

Electrical schematics 67
Error codes 59
EU Declaration..... 69

F

Faults
 troubleshooting.....*See Maintenance*
Fuse
 External 40

G

Grinding disc
 Replacement..... 57

M

Maintenance
 Access 59
 Common faults 58
 Daily 57
 Error codes*See Error codes*
 Inspection list 57
 Precautions 57

O

Operation..... 53
Options 41
 Water connection 41

P

Power
 choice 40
 inlet..... 40
 source 40

S

Spare Parts 60
Specifications
 Electrical 40

T

Tools
 Availble tools 42
 changing 56
 Snap-On 56

Transport..... 52
 lifting 52
 manual 52

W

Warranty 68

10 Contact information

Sweden (Head Office)

Heljesvägen 10
Box 187
SE-437 22 Lindome

Phone: +46 (0) 31 99 49 70
Fax: +46 (0) 31 99 48 70
E-mail: info@scanmaskin.se
Website: www.scanmaskin.se

Denmark

Torvegade 22
DK-7330 Brande

Phone: +45 97 18 00 58
Fax: +45 97 18 45 58
E-mail: info@scanmineral.dk
Website: www.scanmaskin.se

Norway

Postboks 6, Furuset
N-1001 Oslo
Tomtveien 12
N-2015 Leisund

Phone: +47 63 87 60 00
Fax: +47 63 87 60 01
E-mail: info@scanmaskin.no
Website: www.scanmaskin.no

Finland

Raudoittajantie 3 A
FIN-06450 Porvoo / Borgå

Phone: +358 10 292 4700
E-mail: info@scanmaskin.fi
Website: www.scanmaskin.fi

USA

1407 132nd Avenue Northeast, Suite 8
Bellevue, Washington, 98005

Phone: +1 425 209 0147
E-mail: info@scanmaskin.com
Website: www.scanmaskin.com

NOTERINGAR/NOTES

NOTERINGAR/NOTES

Notepad area for page 74, consisting of 20 horizontal lines.

NOTERINGAR/NOTES

Notepad area for page 75, consisting of 20 horizontal lines.

SCANMASKIN

MACHINES—MINERALS—KNOW-HOW

MACTOOL
Diamond & Construction Products

www.mactool.co.za